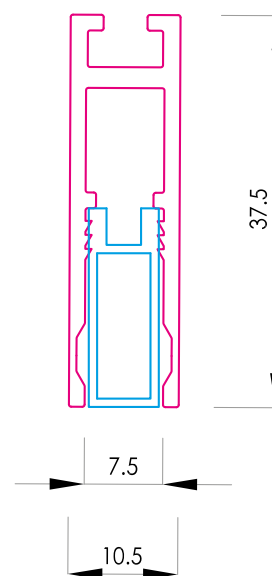


ESTRO KF

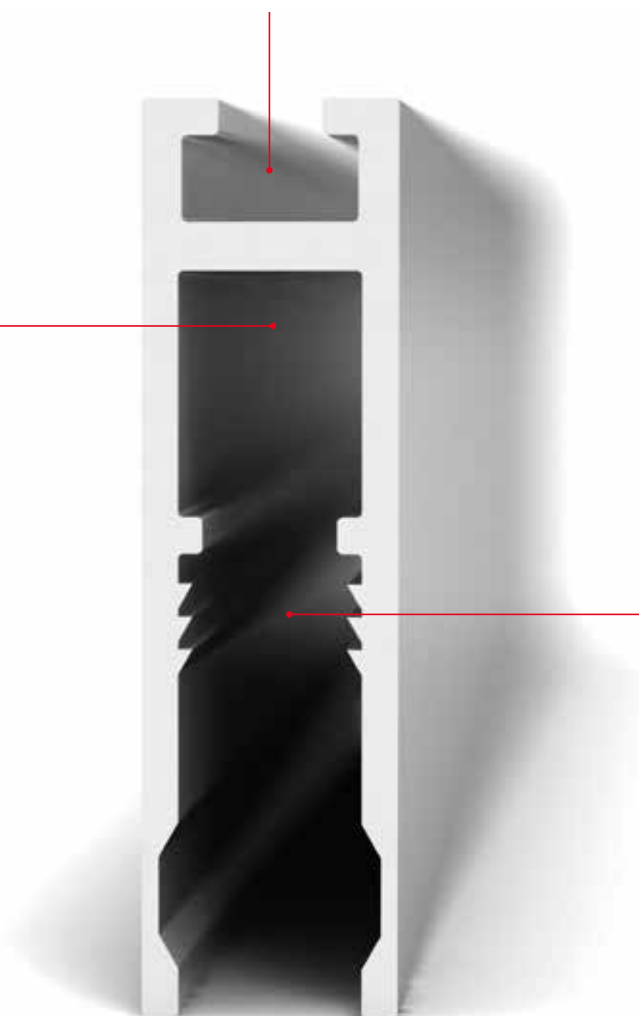


EIGHT
ESTRO slim
ESTRO slim



alloggiamento dado M4
per fissaggio
M4 nut housing
for fixing

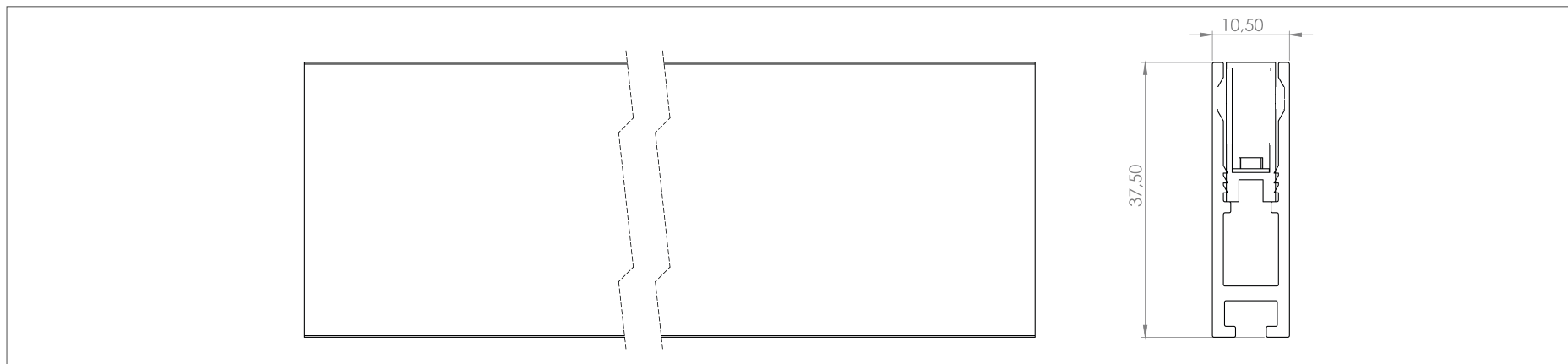
passaggio cavo
elettrico interno
internal electrical
wire passage



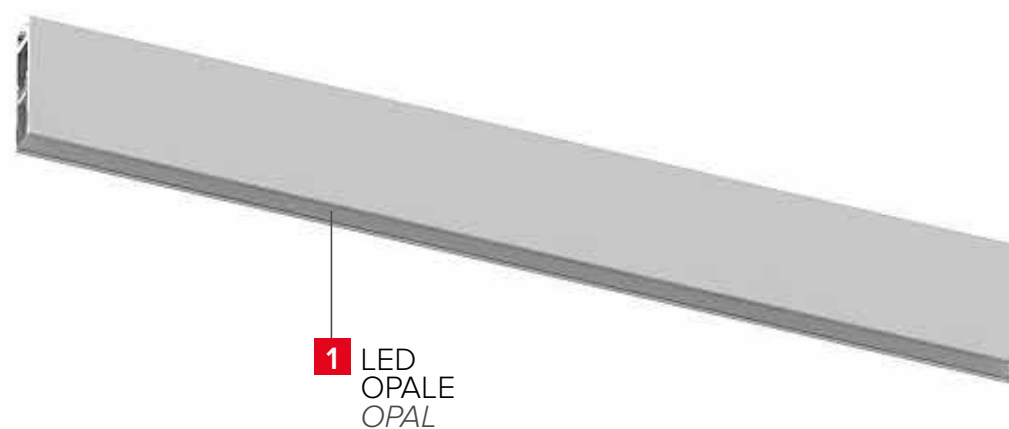
alloggiamento LED
LED housing

DATI TECNICI *TECHNICAL DATA*

DIMENSIONE *DIMENSION*



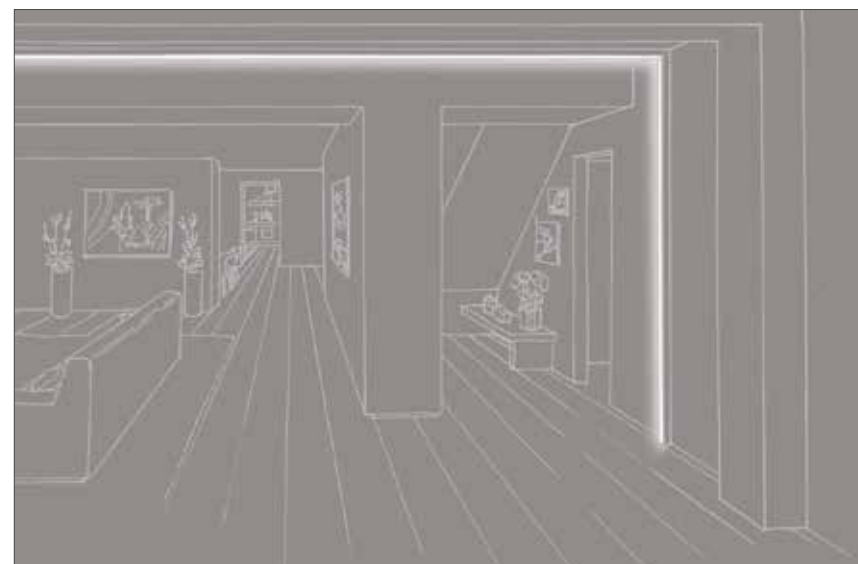
ASSIEME DELLE SOLUZIONI POSSIBILI *POSSIBLE SOLUTIONS COMBINATIONS*



MONTAGGIO *INSTALLATION*



UTILIZZO *APPLICATION*



COME ORDINARE *HOW TO ORDER* CREAZIONE DEI CODICI *CODE CREATION*

EIGHT
ESTRO slim
ESTRO slim

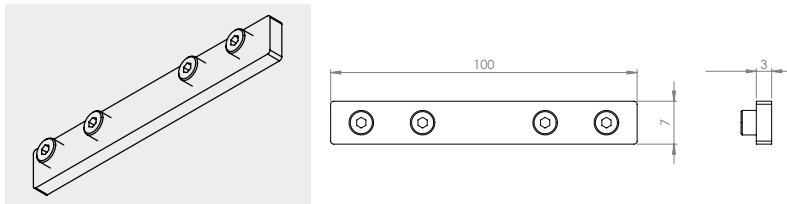
1 ESTRO KF LED OPAL* - APPLICAZIONE CON LEDBAR OPAL *APPLICATION WITH OPAL LEDBAR*

Nome <i>Name</i>	Diffusore <i>Diffuser</i>	LED			Temp. di colore K <i>Colour temp. K</i>			Fascio° <i>Beam°</i>	Lungh. in cm <i>Length in cm</i>			Finitura** <i>Finish**</i>
		3014 SLIM			2700 K	3000 K	4000 K		3 cifre 3 <i>digits</i>			
ESTRO	OPAL	10W/m			2700 K	3000 K	4000 K	-	n	n	n	nn
KF	O	C			A	B	C	0	n	n	n	nn

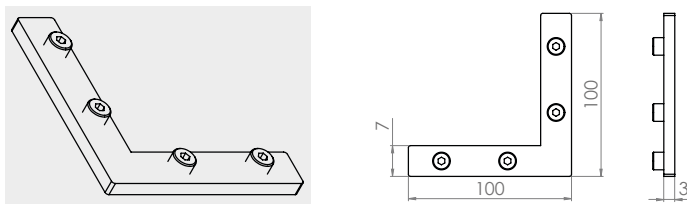
Esempio: KFOCA0100nn = ESTRO KF - 2700 K - LED 3014 10W/m - 100 cm *Example: KFOCA0100nn = ESTRO KF - 2700 K - LED 3014 10W/m - 100 cm*

| ACCESSORI *ACCESSORIES*

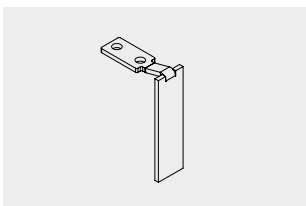
ESTRO KFKIT02 - Giunto lineare *Linear joint*



ESTRO KFKIT03 - Giunto a L *L joint*



ESTRO KFTAP - KIT 2 TAPPI PROFILO 2 *PROFILE CAPS KIT*



Famiglia <i>Family</i>				Finitura** <i>Finish**</i>
ESTRO				
KF	T	A	P	nn

**Finiture vedi pag. 28 - *Finishes see pag. 28*

Aggiungere sulla misura totale 0,3 cm + 0,3 cm per i tappi - *Add on measure total 0.3 cm + 0.3 cm for caps*

*Necessita di DRIVER da ordinare separatamente vedi pag. 24 - *DRIVER required, to be ordered separately, see pag. 24*