

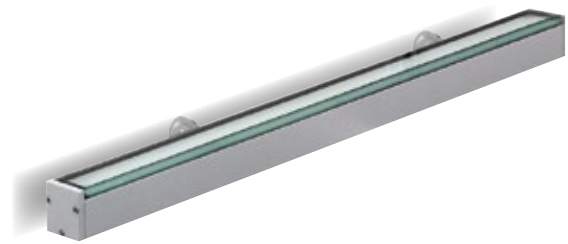
TRATTO WALL

Tratto Wall è un proiettore lineare a parete dalle ridotte dimensioni. Corpo in alluminio pressofuso ed estruso ad alta resistenza all'ossidazione, diffusore in vetro temperato. L'orientabilità ha un'ampiezza di 180° ed è garantita da un sistema a ghiera graduata con progressione di 10°. Ideale per l'enfatizzazione di facciate o cornicioni.

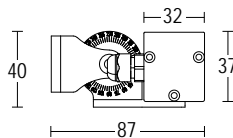
Tratto Wall is a compact linear flood light. Body in die cast and extruded aluminum which is highly resistant to oxidation. Adjustable 180° with a graduated lock system adjustable by 10°. Ideal for emphasizing facades and buildings.



TRATTO WALL



- .05** grigio antracite
anthracite grey
- .13** grigio chiaro
light grey



ACCESSORI ACCESSORIES



Alimentatore 24VDC IP 67 SELV
IP 67 LED driver 24VDC SELV
565-IP67 15W 24VDC
621-IP67 40W 24VDC
547-IP67 120W 24VDC



566
Braccio di estensione
150-300 mm
*150-300 mm
extension arm*



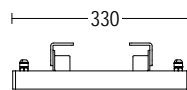
Griglia anti-abbagliamento
anti glare louvre
636 Tratto 300
637 Tratto 600
638 Tratto 900
639 Tratto 1200



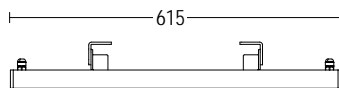
289
Scatola IP 66
per alimentatore remoto
*IP 66 box for
remote LED driver*



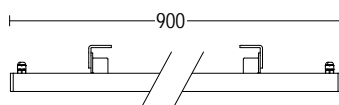
279
Connettore per
cablaggio in cascata IP 68
*IP 68 connector
for through wiring*



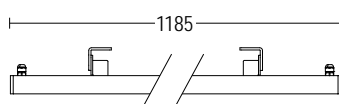
1533.FKX.O.-- 4W LED 3000K 360lm
118° ^
24VDC
alimentatore remoto SELV non incluso
remote SELV LED driver not included



1534.P1X.O.-- 9W LED 3000K 720lm
118° ^
24VDC
alimentatore remoto SELV non incluso
remote SELV LED driver not included



1536.GLX.O.-- 12W LED 3000K 1020lm
118° ^
24VDC
alimentatore remoto SELV non incluso
remote SELV LED driver not included



1537.LRX.O.-- 16W LED 3000K 1380lm
118° ^
24VDC
alimentatore remoto SELV non incluso
remote SELV LED driver not included