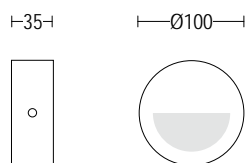
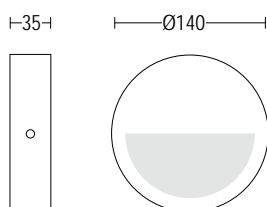


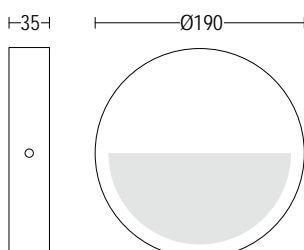
SPIA FLAT



1388.CAX.O.-- 7W LED 3000K 900lm
 110° ^
 220-240V 50/60hz
 alimentatore incluso *LED driver integral*



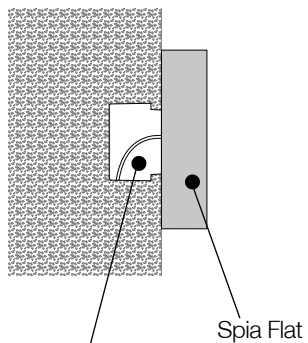
1389.EEX.O.-- 12W LED 3000K 1400lm
 110° ^
 220-240V 50/60hz
 alimentatore incluso *LED driver integral*



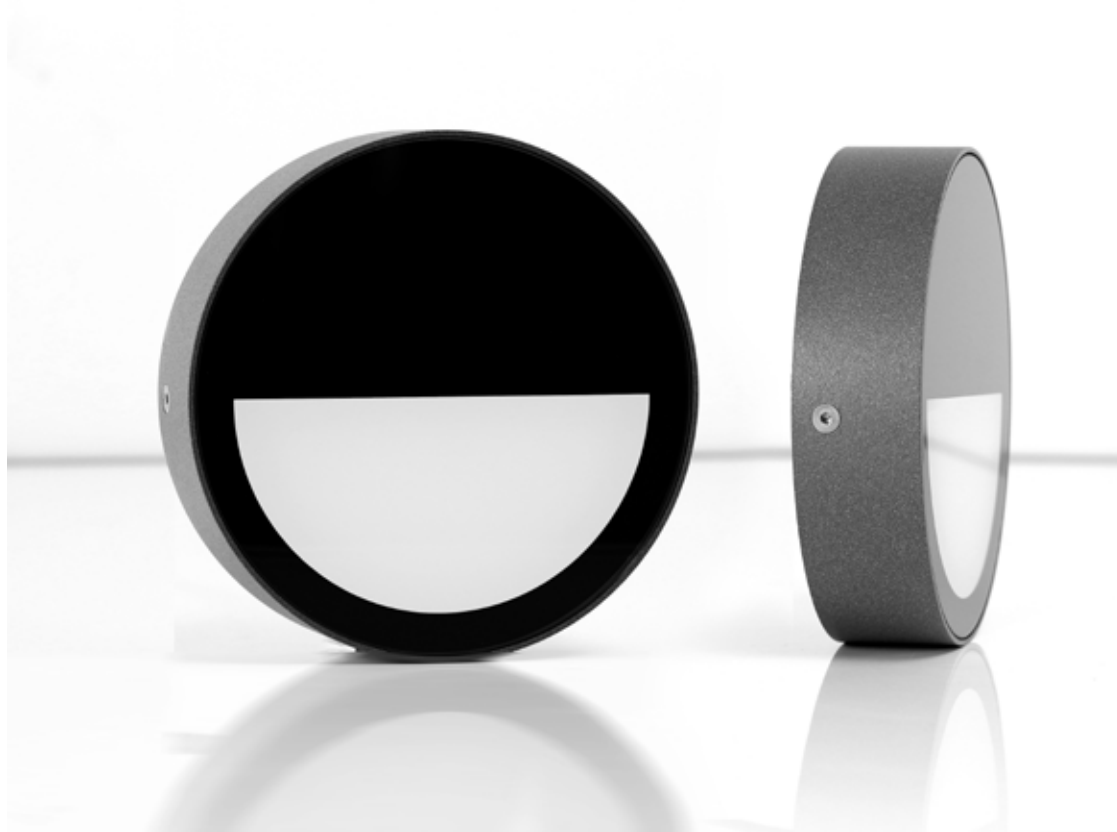
1390.HEX.O.-- 15W LED 3000K 1800lm
 110° ^
 220-240V 50/60hz
 alimentatore incluso *LED driver integral*

- .05 grigio antracite
anthracite grey
- .13 grigio chiaro
light grey

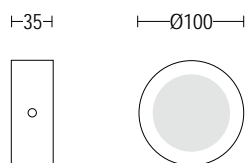
SPIA FLAT



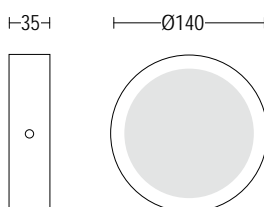
Per una corretta installazione è necessario l'utilizzo della scatola mod. 503 o equivalente.
A wall Box, 503 or equivalent, is compulsory for a proper installation.



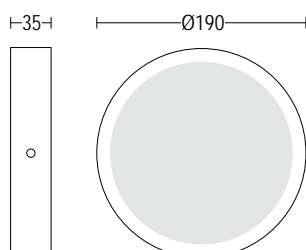
SPIA FLAT



1385.CAX.O.-- 7W LED 3000K 900lm
120° \wedge
220-240V 50/60hz
alimentatore incluso *LED driver integral*



1386.EEX.O.-- 12W LED 3000K 1800lm
120° \wedge
220-240V 50/60hz
alimentatore incluso *LED driver integral*



1387.HEX.O.-- 15W LED 3000K 1800lm
120° \wedge
220-240V 50/60hz
alimentatore incluso *LED driver integral*

-  **.05** grigio antracite
anthracite grey
-  **.13** grigio chiaro
light grey