

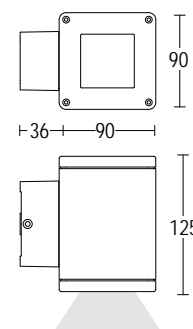
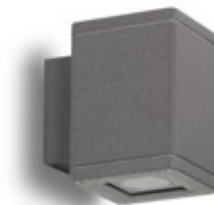
MICROTORRE



Proiettore a parete compatto realizzato in alluminio pressofuso ad alta resistenza all'ossidazione. E' dotato di un sofisticato sistema ottico ad uno o due fasci di diverse ampiezze. L'apparecchio è stato ideato per l'illuminazione d'effetto di pareti e facciate.

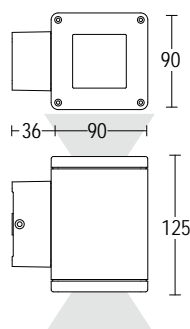
Minitorre is a cleverly designed compact wall luminaire made of die-cast aluminium high resistance to oxidation. It incorporates metal halide and LEDs light sources with sophisticated optical technology to provide a combination of different beams for up and down lighting applications. TORRE is particularly appropriate for lighting facades in the architectural environment.

MICROTORRE



1960.AHF.T-- 6W LED 3000K 900 lm
32° ^
220-240V 50/60hz
alimentatore incluso *LED driver integral*

1960.BRF.T-- 12W LED 3000K 1800lm
32° ^
220-240V 50/60hz
alimentatore incluso *LED driver integral*



1961.ERF.T-- 12W LED 3000K 2 x 900lm
32° ^
220-240V 50/60hz
alimentatore incluso *LED driver integral*

- .05** grigio antracite
anthracite grey
- .13** grigio chiaro
light grey